

Melbourne Airport Expansion-Project Gates & Project 2

The project

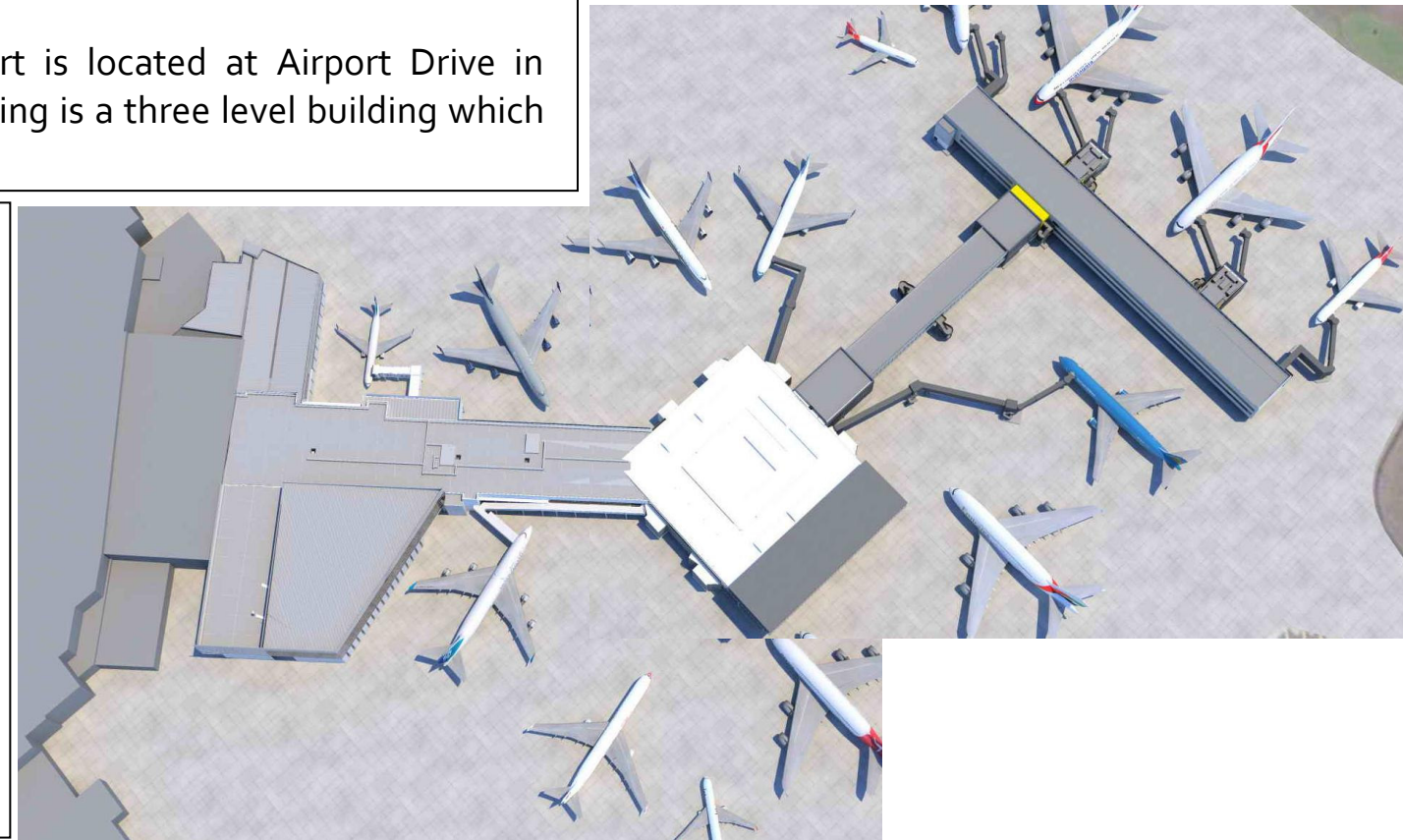
Terminal 2, the international terminal at Melbourne Airport is located at Airport Drive in Tullamarine, adjacent to the Tullamarine Freeway. The building is a three level building which is being expanded.

The Meinhardt building science group undertook analysis which included:

- Detailed energy modelling
- Daylight modelling
- CFD analysis
- Thermal comfort analysis

To demonstrate compliance with green star assessments and requirements.

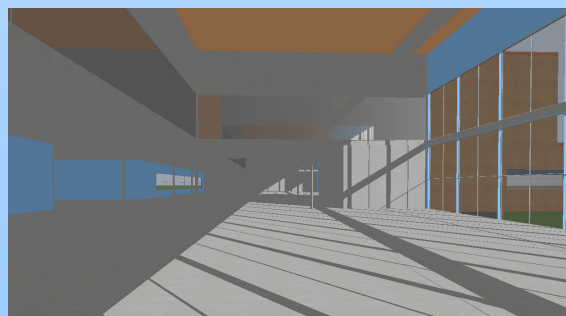
In addition the MBSG compiled building users guides for the expansions and assessed the projects on Green Star criteria and compliance.



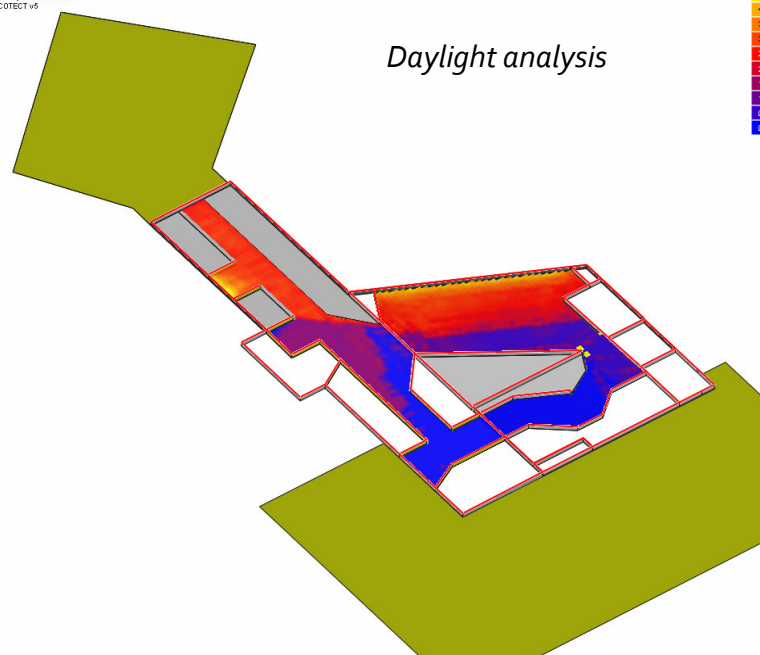
Location
Melbourne

Building type
Airport-Retail tenancies, concourse, lounges

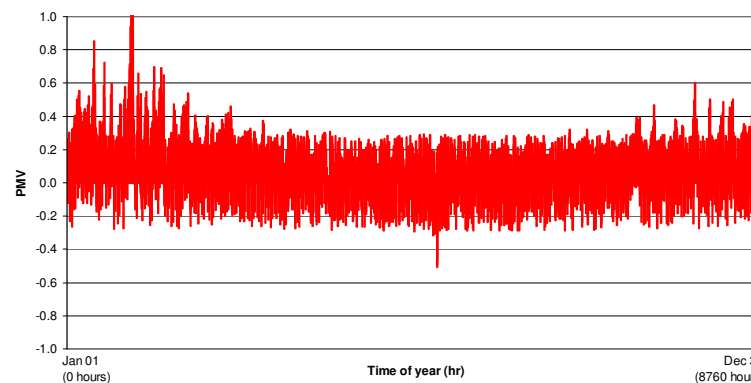
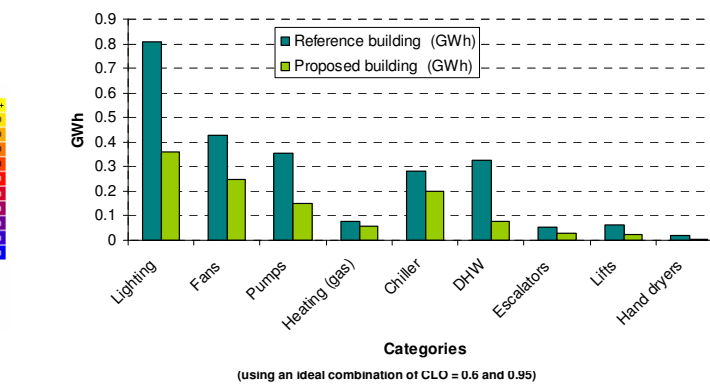
- Features**
- Hydronic floor heating/cooling
 - Displacement ventilation
 - Designed to follow green star assessment methodology
 - Energy efficient design
 - Good indoor environmental quality



Daylight Analysis
Daylight Factor
Value Range: 0.00 - 5.00 %
(c) ECOTECH v5



Annual Base Building Energy Usage



Thermal comfort and energy modelling

CFD analysis to determine air change effectiveness

